

About Spondylolisthesis

OVERVIEW

Here is a look at the two types of spondylolisthesis conditions known as degenerative and isthmic.

DEGENERATIVE

STEP 1

In this condition, the joints weaken and become arthritic.

STEP 2

The vertebra slides forward and the spinal cord becomes distorted. This pinches the nerve root and causes pain.

SYMPTOMS

Pain may be felt in the back around the site of injury. Pain can also be felt radiating down to legs and feet.

ISTHMIC

STEP 1

In this condition, bone above the joint fractures.

STEP 2

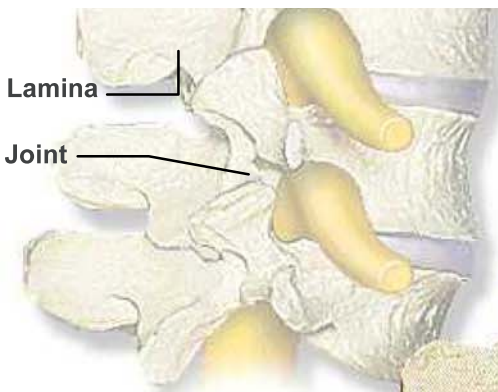
The vertebra slides forward and the spinal cord becomes distorted. This pinches the nerve root and causes pain.

SYMPTOMS

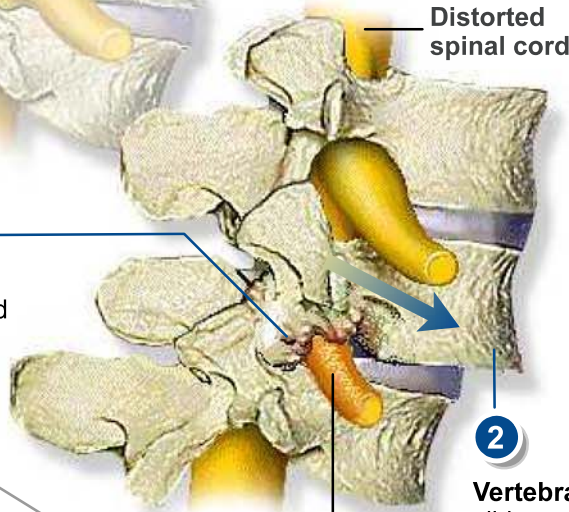
Pain may be felt in the back around the site of injury. Pain can also be felt radiating down to the legs and feet.

DEGENERATIVE SPONDYLOLISTHESIS

SPINE BEFORE DEGENERATION OCCURS



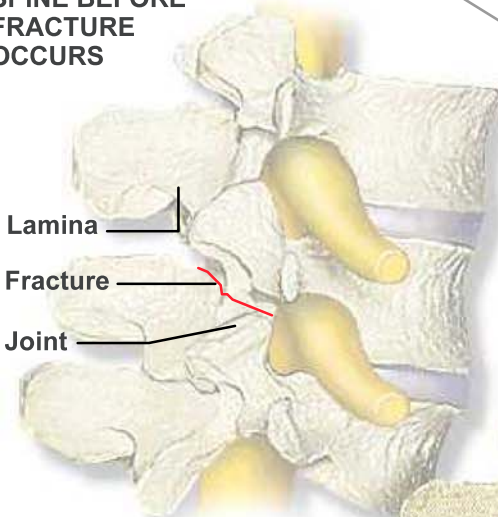
1
Joints weaken and become arthritic.



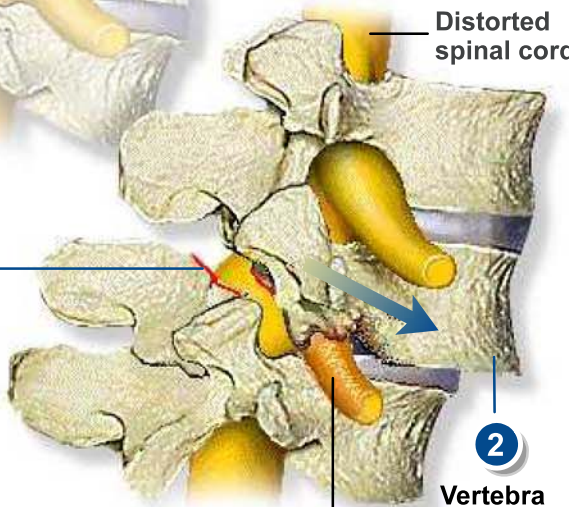
2
Vertebra slides forward.

ISTHMIC SPONDYLOLISTHESIS

SPINE BEFORE FRACTURE OCCURS



1
Bone above the joint fractures.



2
Vertebra slides forward.